

„Saga di Valle Bavona“ 7c+/8a (7a obl.) Gendarm de Gramüsèd

FA : Stephan Isensee & Tobias Wolf (1.+2. Sept 2012)

First RP: Tobias Wolf (4.Sept. 2012).

Required Gear:

- 12 draws,
- Metolius Mastercams 0-6 , Camelot C4 #2 for the end of pitch 3 (optional another #2 Camelot for the same pitch)
- Minimum 2 x 50 m ropes or one (70 m rope is just long enough)

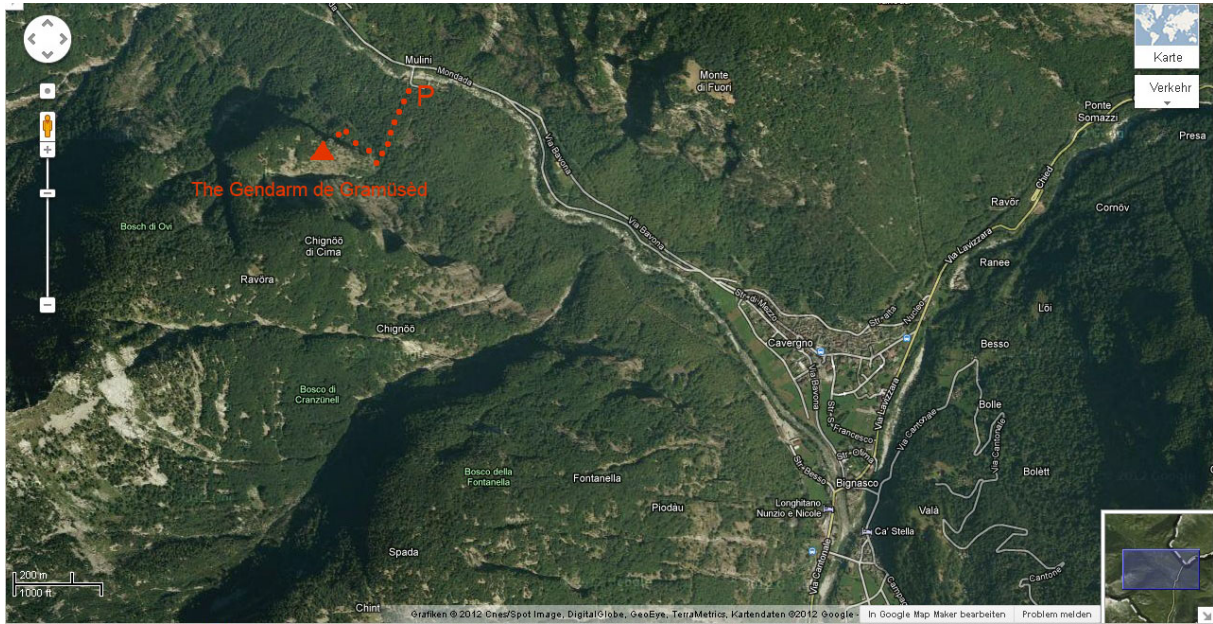
Exposition : Northeast

Location : The Gendarm de Gramüsèd is situated approximately 3 km west of Bignasco. Enter the Valle Bavone from Bignasco and drive till you see the wall clearly on the left. There is only one bridge you can pass the river with the car. (Water-power-plant). There you can park.

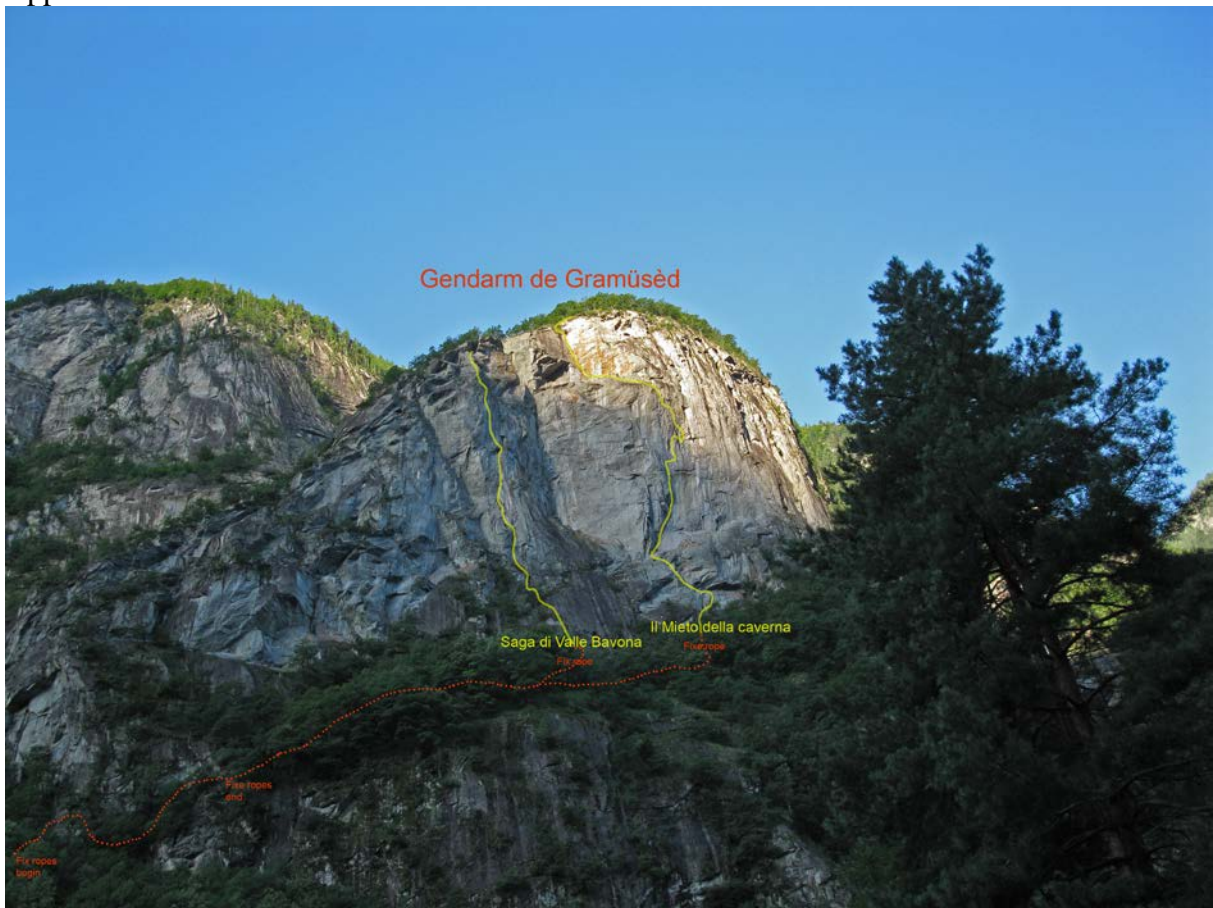
Approach : From the bridge follow a steep dry riverbed (from melting water) straight uphill until it gets to steep (15-20 minutes). Then go 50m right uphill along a wall till you see some fix ropes traversing along some ledges. After the ropes walk sideways (North-West) till you reach the base of the wall. (30 minutes from the car)

Decent: Rappelling the route. In pitch 5 and pitch 6 some bolts have to be clipped to reach the belay.

Location:



Approach:



Topo:

